

Magic Triangle Method Copyright 2010

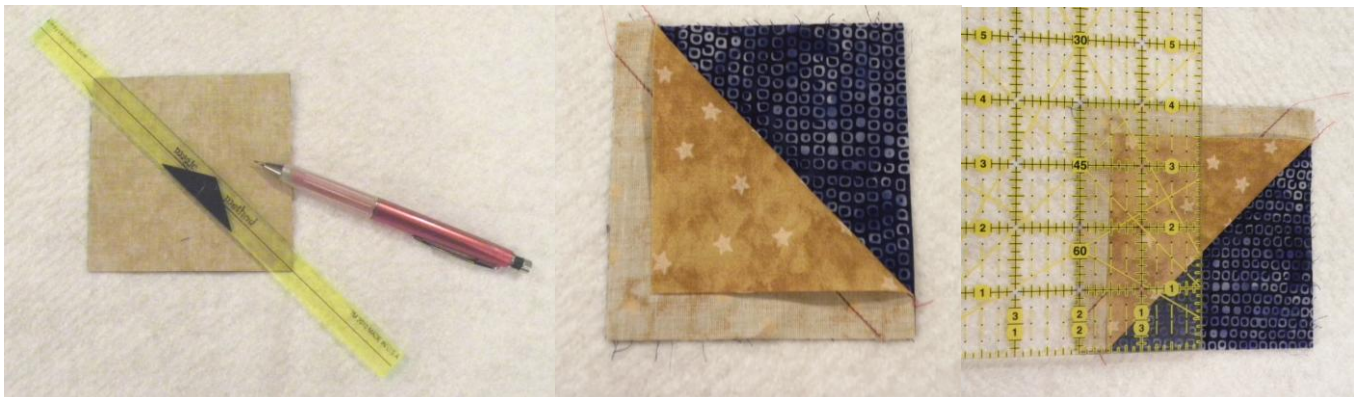
By Cindy K. Casciato

- Eliminate tedious time consuming 1/8" rotary cutting by marking the seam lines using the Magic Triangle Method Tool.
- Add 1" seam allowance to every half-square triangle unit.
- Add 1 1/2" seam allowance to every quarter-square unit.
- Mark the sewing lines using the "Magic Triangle Method Tool" on the wrong side of the squares.
- Sew on the lines. Cut apart to reveal the perfect half-square unit.
- No re-cut is needed.



Half-Square Units- Step by Step

1. Place the two squares right sides together and align the black line down the center of the Magic Triangle Tool with the diagonal points on the wrong side of the square.
2. Using a mechanical pencil mark the sewing lines on the wrong side of the triangle squares.
3. Sew on the marked lines. Open the half-square units and measure to see a perfect half-square triangle units.



Notice that the measurement is shown before the half-square triangle unit is cut out. You start with a whole number in this case 4" cut size squares and after sewing on the lines you get a 3 1/2" square. This is the size needed to make the 9" Ribbon Star Block shown below. Each unit is 3 1/2" until sewn together with 1/4" seams.

4. Cut squares apart between the sewing lines and press seams to the darkest side.

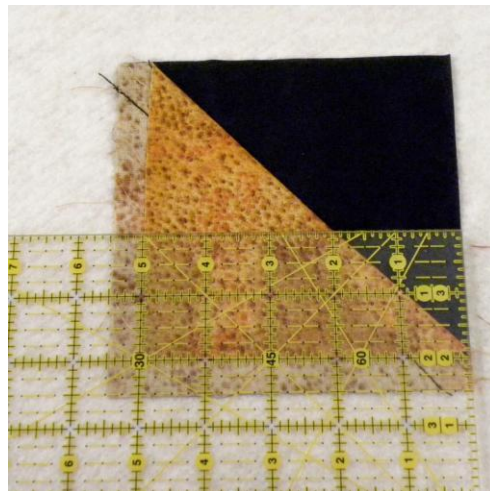
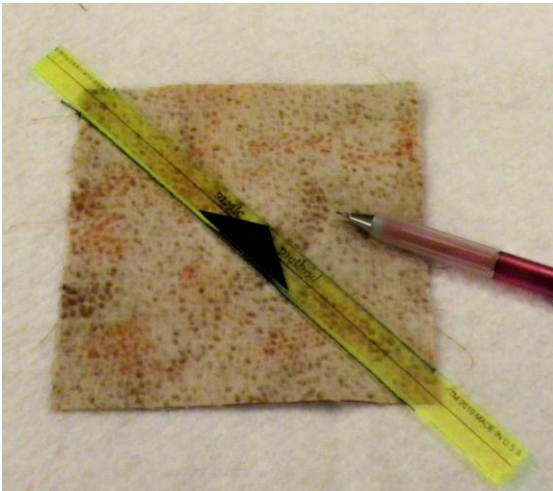




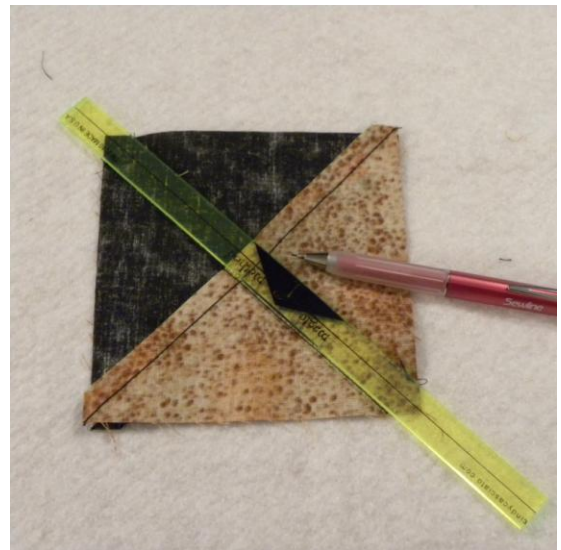
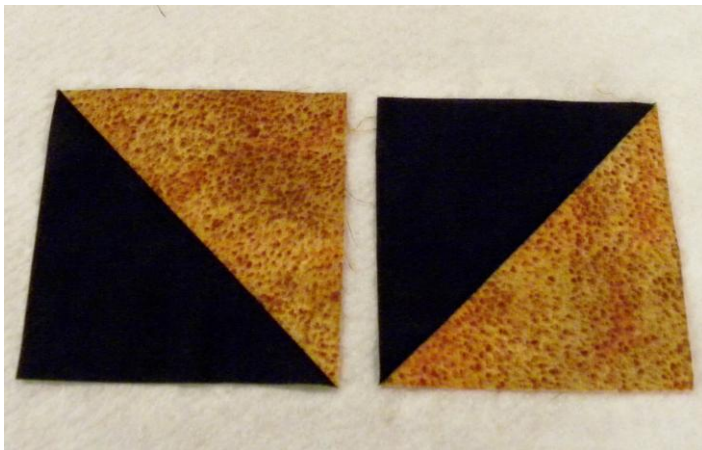
Quarter-Square Triangles - Step by Step

Add $1\frac{1}{2}$ " to the finished size of the triangle square unit for the cutting size of the squares. For example to make the 12" Ohio Star block shown below each of the quarter-square units needs to be $4\frac{1}{2}$ " before sewing them together to make the block. Starting with the finished size of the block you realize that each unit finishes at 4" square. So add $1\frac{1}{2}$ " for seam allowance and cut out $5\frac{1}{2}$ " squares.

1. Make half-square units as described under the half-square triangle technique.



Notice that after the first step the square should measure 5". Each time you use the Magic Triangle Tool and sew on the lines the square reduces by $\frac{1}{2}$ ".

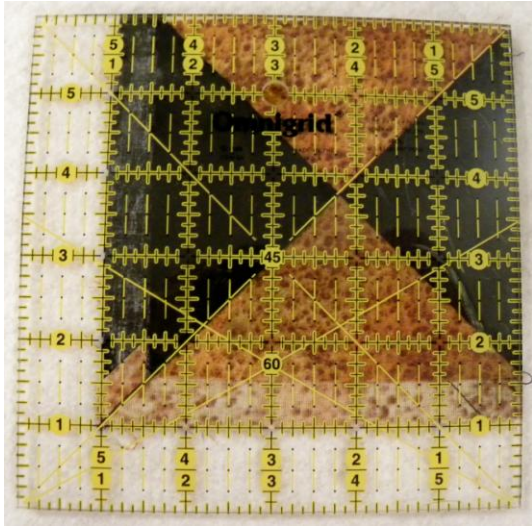


2. Place the two half-squares right sides together with the dark triangles opposite one another.
3. Mark the sewing lines using the Magic Triangle Method Tool. The line will be across the first seam allowance. Make sure the two half-squares are opposing one another and the seams are snuggled tight together.



Quarter-Square Triangles cont.

4. Sew on the marked lines. Open the quarter-square units and measure to see perfect quarter-square triangle units. Check your seam alignment before cutting apart. If you need to make adjustments do it before you cut units apart.
5. Cut the squares apart between the seam lines. Press center seam open so it lays flat.



6. Notice that the quarter-square triangle unit measures the $4\frac{1}{2}$ " necessary to complete the Ohio Star block shown below. There is no added step of cutting down. What a time saver!

